



COLLECTOR

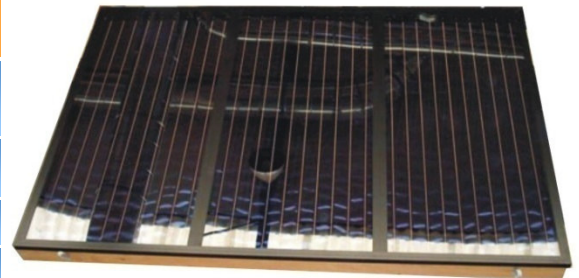
ISOTHERM GF 2 / 3 / 4 / 5

TUBES

TYPE	Harper grid
MANIFOLD TUBES	Copper 22 x 1 mm (UNE-EN 1057, UNE-EN 12165)
RISER TUBES	Copper 8 x 0.5 mm (UNE-EN 1057, UNE-EN 12165)
NUMBER OF RISER TUBES	10
DISTANCE BETWEEN RISER TUBES	100 mm
WELDING	Capillarity welding using copper, phosphorus and silver

SELECTIVE COATING

MATERIAL	Copper with selective coating using titanium oxide
DIMENSIONS	2205 x 1000 x 0.2 mm
ABSORPTANCE	0.95 ± 2%
EMITTANCE	0.05 ± 2%



ABSORBER

PLATE – TUBE JOINT	Ultrasonic welding
USEFUL ABSORBER AREA	2.205 m ²
CAPACITY	1.5 l
MAX. OPERATING PRESSURE	8 Kg / cm ²
TEST PRESURE	16 Kg / cm ²
OPERATION WEIGHT	9.1 Kg
EMPTY WEIGHT	7.6 Kg

SOLAR GLASS / 1

TYPE	Solar tempered
THICKNESS	4 mm
IRON OXIDE CONTENT	< 0.05%
DIMENSIONS	2225 x 1021 mm
TRANSMITTANCE	91%
SEALING	EPDM

INSULATION / 1

MATERIAL	Solar mineral wool
BACK THICKNESS	50 mm
CONDUCTIVITY	0.036 W / mK
BEHAVIOUR WITH WATER	Not absorbent (standard BS-2972)

CASING / 1 / 2 / 3 / 4 / 5

MATERIAL	Low-weight varnished wood for outdoor use
DIMENSIONS	2285 mm 2128 mm / 2; 3178 mm / 3; 4228 mm / 4; 5278 mm / 5 100 mm
GROSS AREA	4.86 m ² / 2; 7.26 m ² / 3; 9.66 m ² / 4; 12.06 m ² / 5

WEIGHT

OPERATION WEIGHT	105 Kg / 2; 160.5 Kg / 3; 218 Kg / 4; 277.5 Kg / 5
EMPTY WEIGHT	102 Kg / 2; 156 Kg / 3; 212 Kg / 4; 270 Kg / 5

OTHERS

COLLECTOR EFFICIENCY EN 12975 (useful surface)	η_0 : 0.772; k_1 : 3.835 W / m ² K k_2 : 0.0076 W / m ² K ²
---	--

REMARKS

- All specifications are subject to change without prior notice. For further details, please visit www.isofoton.com